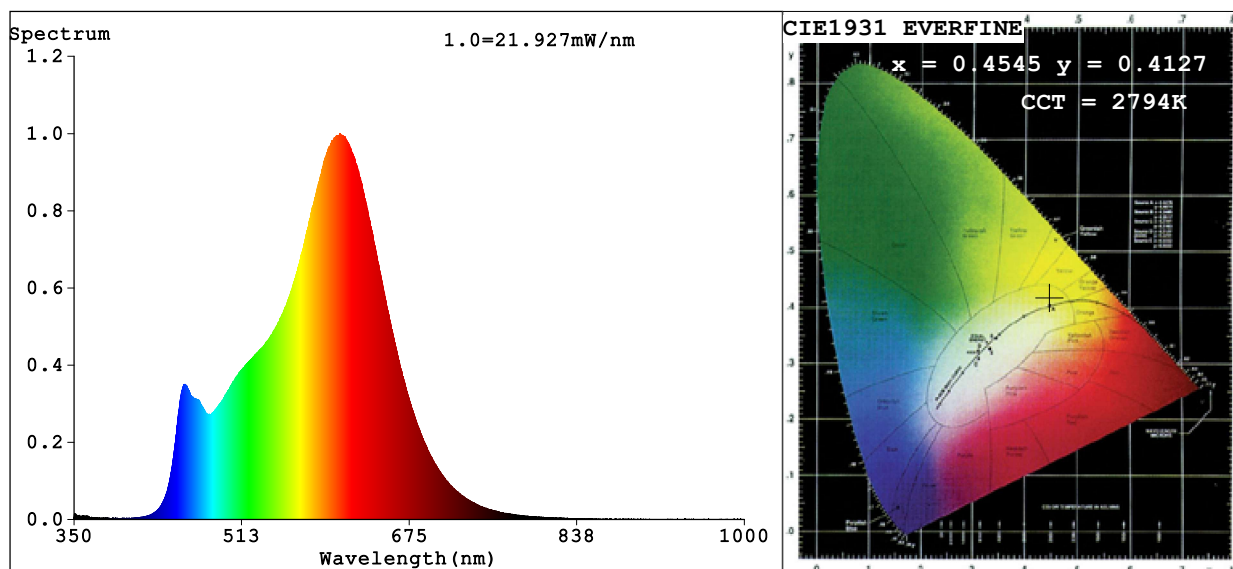


## Spectrum Test Report



### Color Parameters:

Chromaticity Coordinate:  $x=0.4545$   $y=0.4127$   $u'=0.2581$   $v'=0.5273$

CCT=2794K (Duv=0.0013) Dominant WL:Ld =583.3nm Purity=60.3%

Ratio:R=25.0% G=72.0% B=3.0%; Peak WL:Lp=607.8nm FWHM=111.5nm

Render Index:Ra=84.9 CRI=81.4 TM30:Rf=83 Rg=92

R1 =86 R2 =97 R3 =90 R4 =83 R5 =87 R6 =97 R7 =80

R8 =60 R9 =16 R10=94 R11=84 R12=82 R13=89 R14=95 R15=76

### Photo Parameters:

Flux = 993.7 lm Eff. : 83.90 lm/W Fe = 3.071 W

### Electrical parameters:

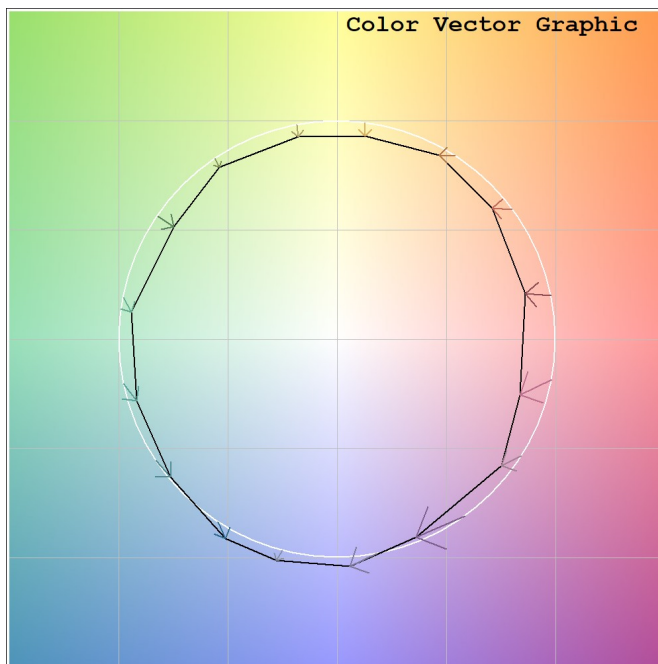
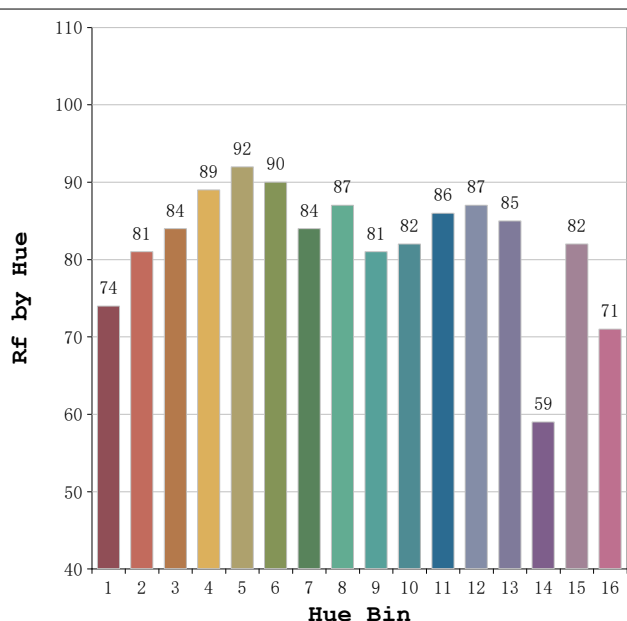
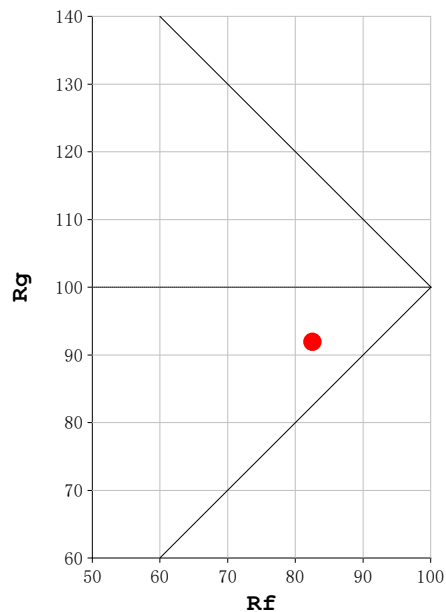
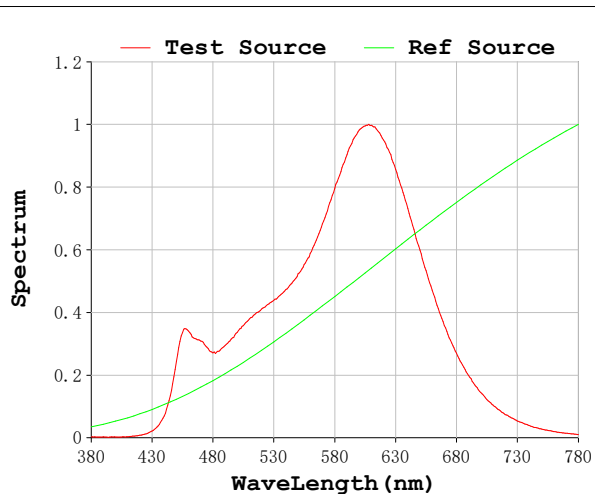
V = 11.998 V I = 0.9872 A P = 11.84 W PF = 1.000

Status: Integral T = 1328 ms Ip = 50926 (78%)

Model:Ecoled Bali 3000K  
Tester:Sergio Carneros  
Temperature:25Deg  
Manufacturer:Luz Negra S.L

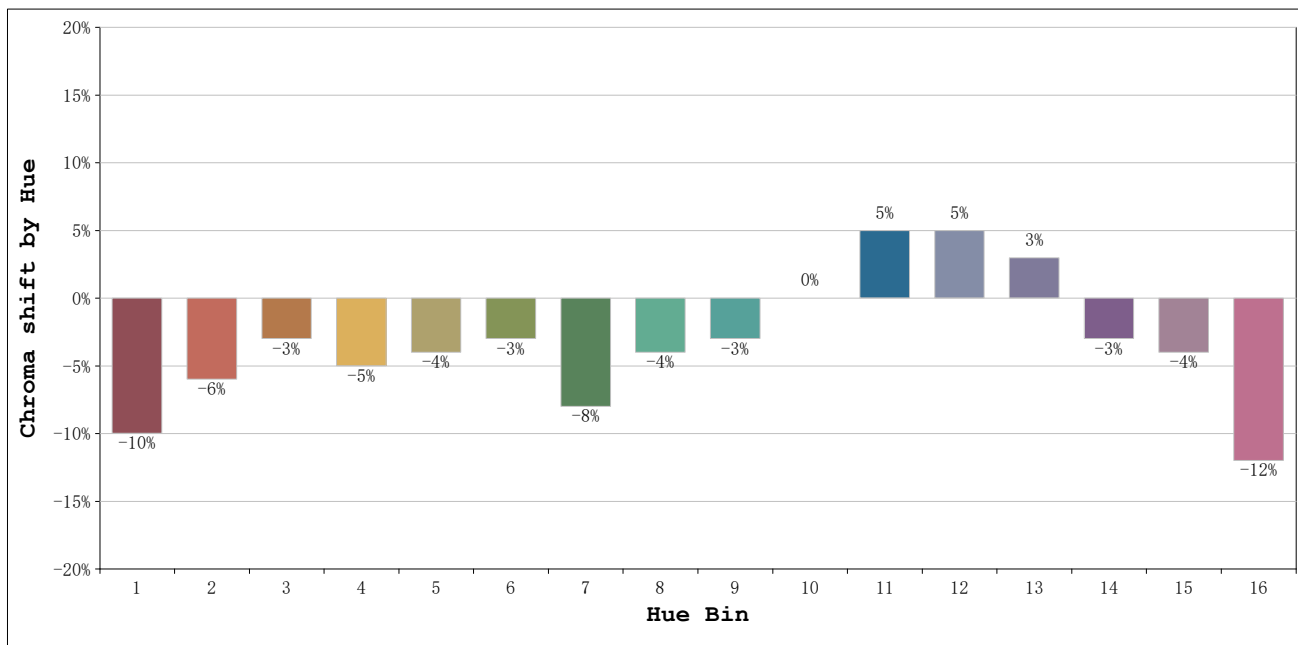
Number: 35.007  
Date:03-06-2026 14:50:10  
Humidity:57%  
Remarks:100cm de tira flexible

**Rf: 83**      **CCT: 2794 K**      **u': 0.2581**  
**Rg: 92**      **Duv: 0.0013**      **v': 0.5273**



Model:Ecoled Bali 3000K  
 Tester:Sergio Carneros  
 Temperature:25Deg  
 Manufacturer:Luz Negra S.L

Number: 35.007  
 Date:03-06-2026 14:50:10  
 Humidity:57%  
 Remarks:100cm de tira flexible



			Graphic shift(%)	
Hue Bin	Hue Angle	Rf	Chroma	Hue
1	0.0° - 22.5°	74	-10	3
2	22.5° - 45.0°	81	-6	5
3	45.0° - 67.5°	84	-3	6
4	67.5° - 90.0°	89	-5	0
5	90.0° - 112.5°	92	-4	0
6	112.5° - 135.0°	90	-3	1
7	135.0° - 157.5°	84	-8	0
8	157.5° - 180.0°	87	-4	6
9	180.0° - 202.5°	81	-3	9
10	202.5° - 225.0°	82	0	10
11	225.0° - 247.5°	86	5	7
12	247.5° - 270.0°	87	5	-1
13	270.0° - 292.5°	85	3	-12
14	292.5° - 315.0°	59	-3	-23
15	315.0° - 337.5°	82	-4	-8
16	337.5° - 360.0°	71	-12	-9

Model:Ecoled Bali 3000K  
 Tester:Sergio Carneros  
 Temperature:25Deg  
 Manufacturer:Luz Negra S.L

Number: 35.007  
 Date:03-06-2026 14:50:10  
 Humidity:57%  
 Remarks:100cm de tira flexible